

# Survey Cart Options

## UTILITYSCAN<sup>®</sup> PRO WITH SIR<sup>®</sup> 4000 CONTROLLER

### MODEL 624

**Antenna Compatibility:** 350 HS, 400 MHz, 900 MHz, 1600 MHz and 2600 MHz antennas

NOTE: 900 MHz antenna requires the use of **FGCB025/19R-11LPR** low profile antenna control cable. 1.6 and 2.6 GHz antenna, requires a survey wheel adapter cable **FG62X/5100B CBL** and **FG62X-PLATE**

- Standard, 3-wheel survey cart and encoder
- Lightweight and foldable design
- 20-in front and 24-in back wheels
- Dimensions:
  - 24.9 x 53.3 x 45.8 in (63.2 x 135.2 x 116.3 cm)
- Antenna centerline to front of cart:
  - 31.6 in (80.2 cm)



### MODEL 644

**Antenna Compatibility:** 300/800 DF, 350 HS, 400 MHz, 900 MHz, 1600 MHz and 2600 MHz antennas; includes foam insert (FG650/INSERT-LG) for antenna placement

NOTE: 900 MHz, 1600 MHz and 2600 MHz antennas require the use of **FG650/INSERT-SM** foam insert; 900 MHz antenna requires the use of **FGCB025/19R-11LPR** low profile antenna control cable

- Large, 4-wheel survey cart and encoder
- Removable, 16-in wheels
- Dimensions:
  - 24.3 x 39.4 x 40.3 in (61.7 x 100 x 102.4 cm)
- Antenna centerline to front of cart:
  - 15 in (38.2 cm)

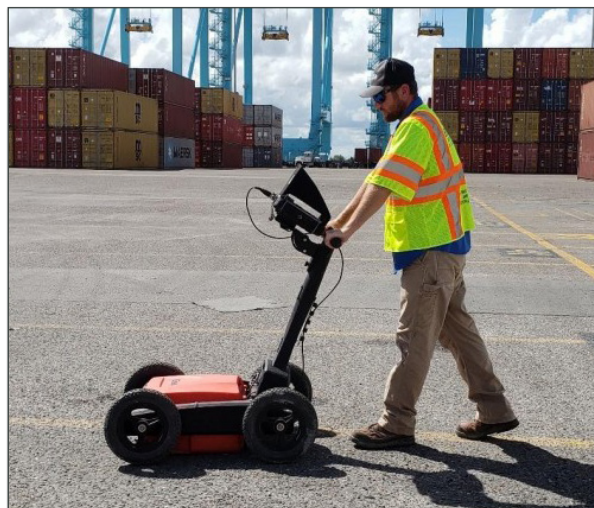


### MODEL 654

**Antenna Compatibility:** 300/800 DF, 350 HS, 400 MHz, 900 MHz, 1600 MHz and 2600 MHz antennas; includes foam insert (FG650/INSERT-LG) for antenna placement

NOTE: 900 MHz, 1600 MHz and 2600 MHz antennas require the use of **FG650/INSERT-SM** foam insert; 900 MHz antenna requires the use of **FGCB025/19R-11LPR** low profile antenna control cable

- Small, 4-wheel survey cart and encoder
- Removable, 12-in wheels
- Dimensions:
  - 30.1 x 47.9 x 41.8 in (76.4 x 121.6 x 106.1 cm)
- Antenna centerline to front of cart:
  - 19 in (48.3 cm)



Geophysical Survey Systems, Inc.

40 Simon Street • Nashua, NH 03060-3075 USA • [www.geophysical.com](http://www.geophysical.com)