

Mining

Avoiding Production Interruptions with GPR

The Project

GPR is used by Schwarze Pumpe GmbH of Germany, a company in the brown coal mining industry. Their use of GSSI equipment involves the detection of boulders, which can be buried in the overburden sediments above the brown coal. Boulders can cause serious damage to equipment and work areas if undetected. Disruption to production times can be expected if an excavator hits a large boulder.

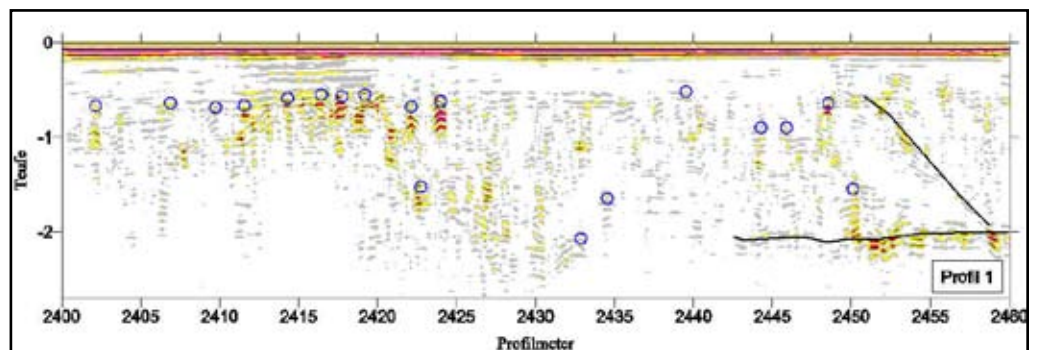


Project Description

Schwarze Pumpe GmbH uses a GSSI SIR system to survey mining areas before their huge excavating machines start working a new site (top photo). The SIR system, along with a 100 MHz antenna, finds all boulders in the area allowing the company to avoid expensive production interruptions. The potential boulder reflections have been circled in the data example below.

Outcome

GPR has been extremely successful in discovering geologic anomalies in the soil. This allows mining companies like Schwarze Pumpe GmbH to produce more resources while increasing profits. They are extremely happy with the GPR results and continue to use GPR for successful boulder avoidance.



**The World Leader in
Subsurface Imaging™**

Courtesy: Schwarze Pumpe GmbH
Spreetal, Germany
www.swz-gmbh.de