

# GSSI Brings You the Future of Utility Locating

## UtilityScan®

[www.geophysical.com](http://www.geophysical.com)

## Introducing the All New UtilityScan

UtilityScan® provides a rich feature set that redefines the level of performance available in a low cost utility locating system. The compact size makes it extremely portable and easy to maneuver in tight survey areas. The simple operation is ideally suited to meet the needs of service providers, engineering contractors and state and local municipalities. Best of all, the breakthrough technology designed into UtilityScan results in high quality data sets that are second to none.

### Field Proven Performance

- UtilityScan is based on GSSI's patented HyperStacking™ technology, which provides excellent near-surface resolution and increased depth penetration in all soil types.
- A new wireless antenna eliminates the need for cabling resulting in a system that can withstand challenging field conditions.
- The simplified app-based user interface ensures that UtilityScan is easy to use and quick to deploy.

### Advanced Capability

- UtilityScan can be provided with the new LineTrac™ power detection module. This module is designed to identify and trace the precise location of underground electric and RF induced utilities.
- UtilityScan uses enhanced software features for gain control, target detection and horizontal banding reduction.



19.25" (49 cm)

22" (56 cm)



# Accurate, Easy and Lightweight

## Enhanced User Experience

UtilityScan features an innovative touchscreen user interface. The app-based user interface provides two modes of operation: ScanEZ and ScanMax. The ScanEZ mode greatly simplifies operation for new users; ScanMax mode incorporates advanced features including GPS and LineTrac functionality.

Additionally, the system employs Dynamic Gain Control (DGC) which enhances ease of use by eliminating the need to repeatedly change gain settings when scanning areas with varying soil conditions. DGC monitors the system gain on the fly during data collection.

## Positioning

An integrated GPS (global positioning system) is included with UtilityScan. For users requiring a higher resolution positioning system, a built-in pole mount is available for mounting GPS systems on survey poles. A Bluetooth interface is provided to facilitate communication with user-provided GPS systems.

## Compact and Portable

The UtilityScan system is incredibly compact. Weighing in at only 34 pounds, UtilityScan can collapse to fit in the back of a small vehicle or even in an airline overhead compartment. For survey conditions in rough terrain, the user can remove the handle and wheels and place the capsule into the (optional) rugged cart.



- 1 Wireless touch-screen controller
- 2 Fully collapsible handle - easy to carry
- 3 350 MHz HS GPR antenna
- 4 Patented LineTrac technology

### System Includes

350 HS antenna (350 MHz)
Choice of control unit with system mount: <ul style="list-style-type: none"><li>• Customized Panasonic Toughpad® FZ-B2 or,</li><li>• NVIDIA SHIELD™ Tablet</li></ul>
Two batteries and two-bay battery charger
Rugged 2 m Ethernet cable
LineTrac, <b>optional</b>
User Manual
2-year warranty

### Optional Accessories

Transit case with custom foam insert
NVIDIA SHIELD™ battery booster kit with cable
Sunshade
Note: Included with Panasonic ToughPad® B2
Model 656 rugged cart



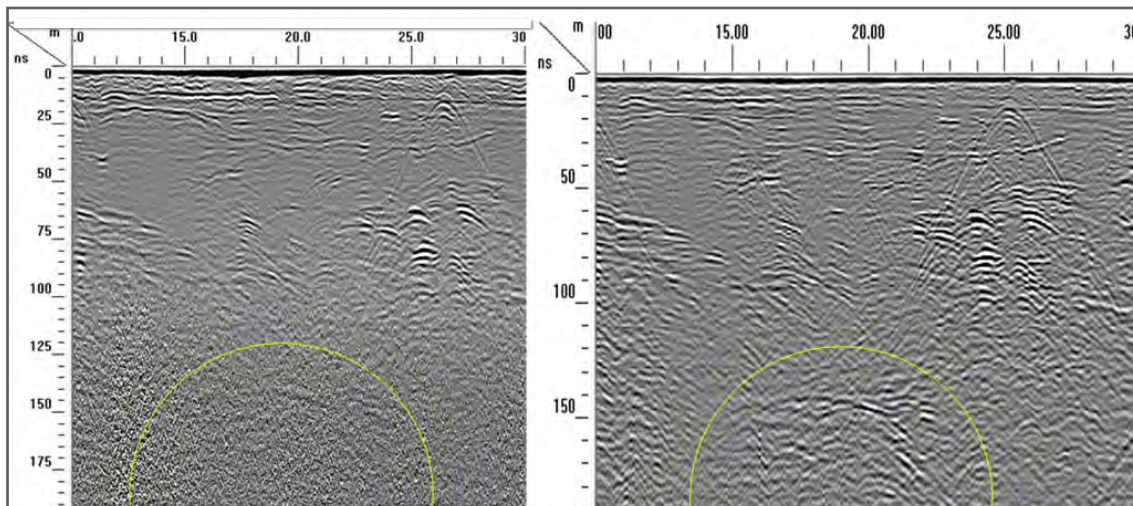


## HyperStacking™

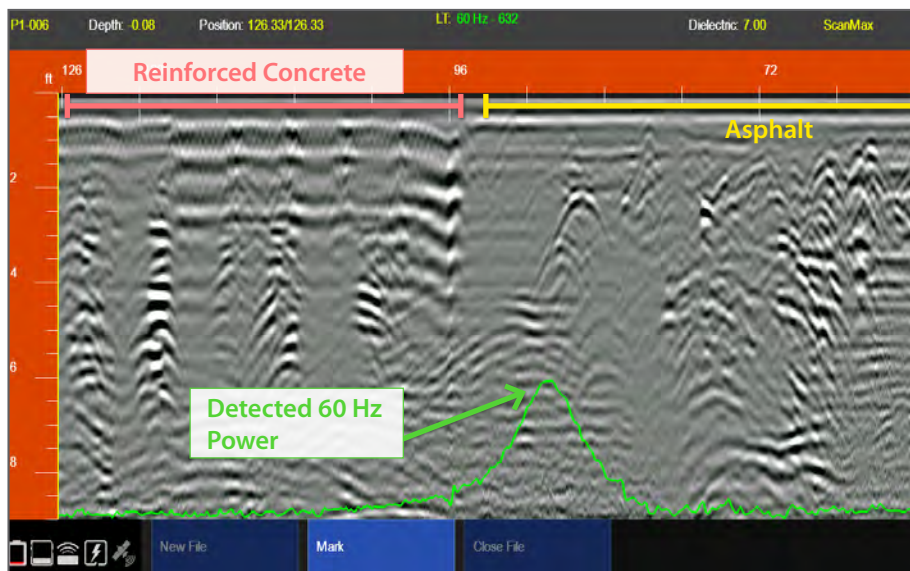
HyperStacking provides superior near surface resolution, deeper depth penetration and vastly improved RF noise immunity when compared to traditional GPR antennas. HyperStacking (HS) is a patented real-time sampling technique that improves performance while maintaining measurement speed and minimizing radiated emissions. This technique uses multiple stacking (averaging) during data acquisition in order to reduce random noise and improve data quality.

### Data Collected with Standard GPR Technology

### UtilityScan Data using HyperStacking Technology



Data illustrates several utilities and geological features at various depths. UtilityScan data (on right) locates deeper targets not visible with standard GPR technology. GPR data has been post-processed in RADAN® 7 software.



## Dynamic Gain Control

The Dynamic Gain Control function recognizes a difference in subsurface conditions and automatically modifies the display gain. This eliminates the need for users to continually adjust the gain during surveys and provides a clearer, consistent data image.

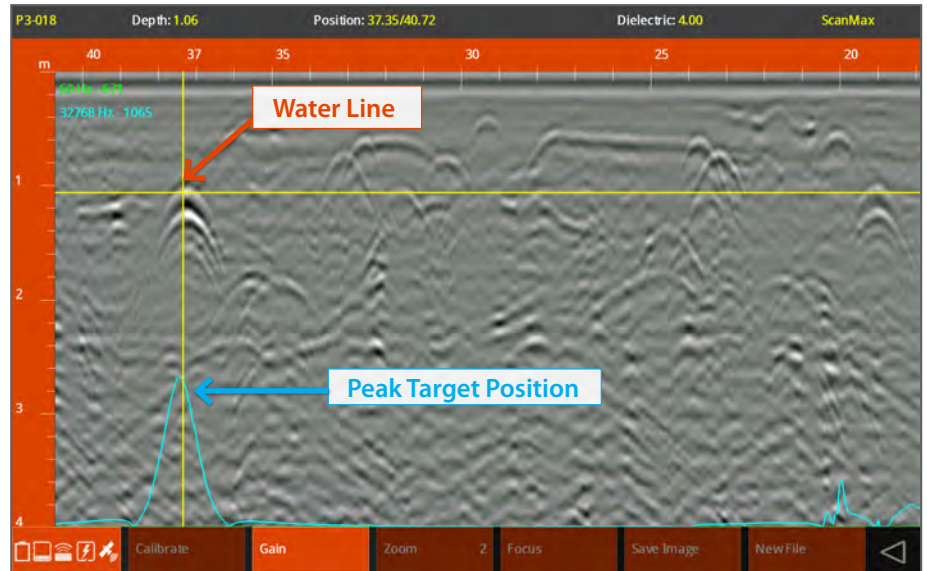
Data shows varying subsurface conditions and multiple unknown targets. Green LineTrac peak indicates presence of live power and aids the user in confirming a valid target identification.

# LineTrac™

LineTrac is the first use of a power detection capability in a utility locating radar system. The most important requirements for utility locators are ease-of-use, accuracy and reliability. The key benefit is that detected power or induced frequencies can be overlaid on the radar data, providing reliable positioning and target information to the user.

The combination of UtilityScan and LineTrac addresses these needs with features that deliver accurate, dependable and repeatable performance. These technologies are integrated into one seamless system to aid in target recognition and mapping for the first time.

Data illustrates several metallic and non-metallic targets at various depths. Yellow cross hairs identify a water line at 3 feet (1 meter) in depth, blue LineTrac peak indicates the detection of an induced 33 KHz active frequency.



## UtilityScan Specifications

Controller		
Tablet	Panasonic Toughpad FZ-B2	NVIDIA SHIELD™ Tablet
Data Storage Internal Memory	64 GB	64 GB
Display	7 inch, 1280 x 800 LCD	8 inch, 1920 x 1200 LCD
System		
Frequency	350 MHz HyperStacking™ antenna	
Battery / Operation Time	94 watt-hour / 7 hours	
Operating Temperature	-20°C to 40°C (-4°F to 104°F)	
Weight with Tablet	34 lbs (15 kg)	
Dimensions (folded)	22 x 19.25 x 12.5 in (56 x 49 x 32 cm)	
Software		
Depth Ranges	3, 6, 9, 12, 15, 25, 35 ft (1, 2, 3, 4, 5, 8, 10 m)	
Display Modes	<b>Linescan Mode:</b> Data displayed with option to show LineTrac overlay <b>Focus Mode:</b> Data displayed in split screen view	

[See Our Website For More Detailed Specifications](#)

sales@geophysical.com

40 Simon Street • Nashua, NH 03060-3075  
 Tel: 603.893.1109 • Toll Free: 800.524.3011 • Fax: 603.889.3984

Geophysical Survey Systems, Inc.

FCC, RSS-220 and CE Certified

Copyright © 2017 All Rights Reserved  
 Geophysical Survey Systems, Inc.  
 04.04.2017