



StructureScan Standard

Complete GPR System for Concrete Inspection and Analysis

The StructureScan Standard system provides a non-destructive means to accurately inspect concrete structures. Concrete professionals use StructureScan Standard to safely locate embedment within concrete structures prior to drilling, cutting or coring. Reach depths of 0-18 inches with confidence using a 2600 MHz or a 1600 MHz antenna, survey cart and SIR-3000 control unit.

Typical Uses for StructureScan Standard Include:

- Concrete inspection – locate metallic and non-metallic targets in walls, floors
- Structure inspection – bridges, monuments, walls, towers, tunnels, balconies, garages, decks
- Condition assessment – map relative concrete condition for rehab planning
- Measure slab thickness
- Void location



Locate Targets

- Locate rebar, post-tension cables, conduits (PVC and metal)
- Surveys up to 18 inches in depth
- Establish and mark targets in real-time with back-up cursor feature

Integrated System

- Windows-based user interface
- Data is displayed on a high-resolution, color screen
- Ability to save data internally

Premium Mobility

- Rugged handcart-based system that is lightweight and simple to transport
- No site hazards or need to close off work areas as with radiography (X-Ray)

Value

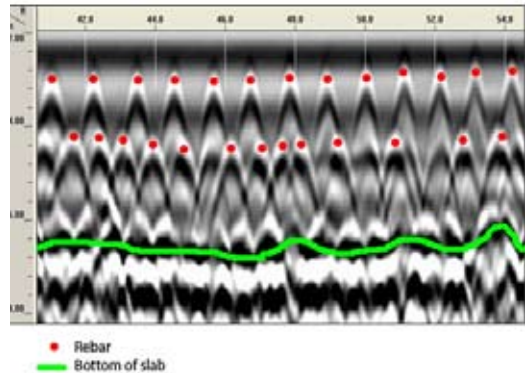
- Flexible system for bridge and utility applications
- Two-year warranty



StructureScan Solutions

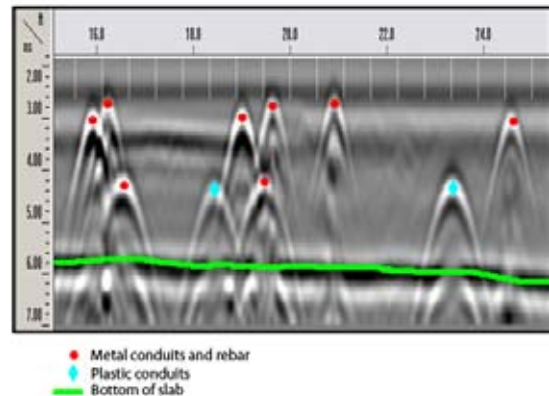
Locate Rebar

Concrete and construction professionals use ground penetrating radar to safely locate structures within poured concrete prior to drilling, cutting or coring. Take advantage of locating targets in real time, with only single-sided access required.



Trace Conduits In Concrete Slabs

Detect what lies beneath the surface before cutting or coring concrete. StructureScan allows concrete and construction professionals to safely identify conduit locations, therefore avoiding costly or dangerous hits.



System Includes

- SIR-3000 control unit
- 1600 MHz or 2600 MHz antenna
- Model 615 handcart with encoder
- 7-meter control cable
- Rugged carrying case
- Two batteries and charger
- Training (at GSSI: NH or CA)

Control Unit Specifications

- External Memory: Based on Compact Flash size
- Internal Memory: 2 GB
- Display: 8.4", full-color, 800x600 resolution
- 64K colors, clearly visible in sunlight
- Post-processing: On-screen
- Battery: Internal (3 hours), 10.8 VDC
- Ports: RS232, Compact Flash memory
USB master & slave
- Environmental: Water-resistant

StructureScan Standard Options:

- 2600 MHz antenna
- 1000 MHz antenna
- 2000 MHz Palm antenna
- SIR-3000 tiltable stand
- 12 VDC power adapter
- SIR-3000 personal carrying harness
- Utility survey cart
- RADAN™ software for post-processing on customer's PC
- Structure Identification module
- 3D QuickDraw module
- InterActive 3D module

