



StructureScan™ Mini Series

Complete GPR Systems for Concrete Inspection and Analysis



Compact Design

The StructureScan Mini makes concrete inspection easy in tight spaces

Integrated Tool

All-in-one concrete inspection tool - antenna, positioning system and control unit combo

System Flexibility

The StructureScan Mini is offered in two versions, the original system with our popular 1600 MHz antenna, or the new system with a 2600 MHz antenna for high resolution data

Durability

Ruggedized plastic casing and wheels for long-lasting performance

Value

The perfect blend of price and performance, backed by a two-year warranty

- 1 All-in-One handheld GPR system
- 2 Ergonomic handle and controls
- 3 Easy to use operator interface with color display screen
- 4 Survey wheel encoder
- 5 Guiding laser for locating



www.geophysical.com

StructureScan Mini Series

Introducing the Mini - our smallest StructureScan system. The StructureScan Mini Series is ideal for locating the position and depth of rebar, conduits, post-tension cables, and voids in concrete. The high resolution, LED backlit 5.7" display provides a detailed image of the subsurface structure. In addition to viewing, the data image can be stored directly to a SD-RAM card for later playback, or transferred to a computer for printing or integration into a report.

The StructureScan Mini Series offers a lightweight alternative to other GPR systems, weighing in at just over three pounds. The small size of the unit makes it easy to transport to the job site and once on site, convenient to scan around obstacles and into tight spaces. The Mini is very easy to use – new users will become proficient in a few short hours. The Mini aids in target detection by marking the data on screen with a small dot when characteristics of rebar or conduit are identified. The lasers on the side of the unit indicate the exact location of the center of target for accurate marking of targets embedded in the concrete.



StructureScan Mini

Deeper Signal Penetration

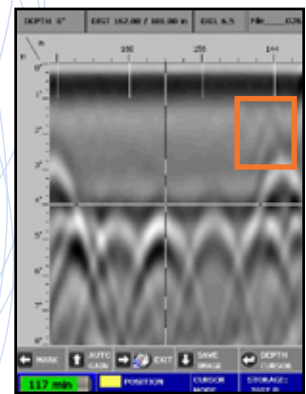
The StructureScan Mini is GSSI's portable integrated GPR system for concrete inspection. This handheld unit is used to locate rebar, conduits, post-tension cables, voids and determine concrete slab thickness.

With a 1600 MHz antenna, and depth penetration of up to 20 inches (50cm), the StructureScan Mini offers the perfect blend of data resolution and depth. Used worldwide, it has quickly become the standard for concrete imaging. Additionally, the StructureScan Mini is available with 2D or 3D capabilities, flexible for your job site needs.

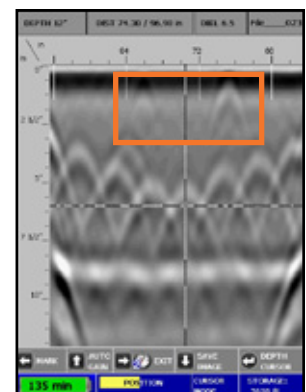
System Specifications

Center Frequency: 1600 MHz
Depth Range: Up to 20 inches (50 cm)
Unit Weight (with battery): 3.3 pounds (1.6 kg)
Dimensions: 6 (w) x 7 (h) x 9 (l) in. (15.24 x 17.78 x 22.86 cm)
Languages: English, Spanish, French
Environmental: IP-65

1600 MHz



Data showing a small 5/8" plastic conduit (less visible) over rebar mat.



Small 1/2" conduits (less visible) very close to surface. Note strong horizontal reflection, representing bottom of slab.

StructureScan Mini HR

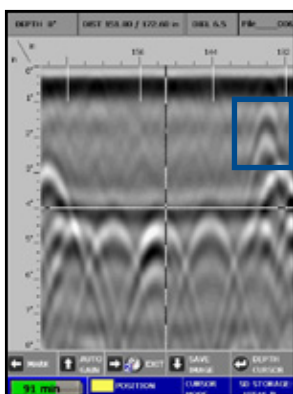
Outstanding Data Resolution

The StructureScan Mini HR is GSSI's all-in-one high-resolution GPR system for concrete inspection. With a 2600 MHz antenna, this hand-held system locates rebar, conduits and post-tension cables in depths of up to 16 inches (40 cm).

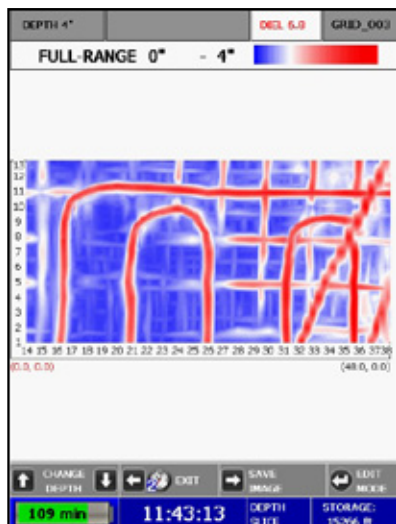
The StructureScan Mini HR is available in two models; 2D, for real-time target location and 3D, for an x-ray like image. Ideal for complex areas, the StructureScan Mini HR can delineate small targets with superior vertical and horizontal resolution.



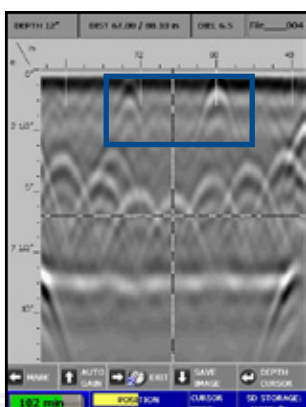
2600 MHz



Data showing a small 5/8" plastic conduit over rebar mat.



Collected with StructureScan Mini HR, data represents 3D image of radiant heating tubing in concrete slab.



Small 1/2" conduits very close to surface. Note sharp hyperbola tails.

Typical Uses for StructureScan Mini Series

- Concrete inspection – locate metallic and non-metallic targets in walls, floors and ceilings
- Structure inspection – bridges, monuments, walls, towers, tunnels, balconies, garages, decks
- Condition assessment – map relative concrete condition for rehab planning
- Measure slab thickness
- Void location

System Specifications

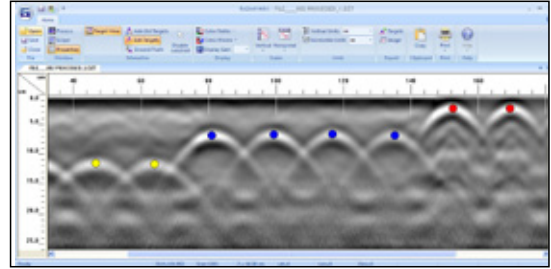
Center Frequency: 2600 MHz
Depth Range: Up to 16 inches (40 cm)
Unit Weight (with battery): 3.3 pounds (1.6 kg)
Dimensions: 6 (w) x 7 (h) x 9 (l) in. (15.24 x 17.78 x 22.86 cm)
Languages: English, Spanish, French
Environmental: IP-65

Software Solutions

RADAN® for StructureScan Mini

RADAN for StructureScan Mini is specifically made for the StructureScan Mini Series. It is designed to process, view, and document 2D data collected with the StructureScan Mini. RADAN for StructureScan Mini can perform the following functions:

- Copy images to third party software for documentation purposes
- Save images
- Print to all Windows supported printers
- Background Removal filtering
- Establish Ground Truth for near accurate depth calculation
- Dielectric calculation
- Colorize the data
- Add targets and export target information in an Excel format
- Gain (contrast) control



RADAN® 7

RADAN is GSSI's post-processing software for GPR data. With its modular design, RADAN allows users to select the processing functions that best suit their professional needs. RADAN is Windows based, providing a familiar and easy to use environment for all levels of experience.

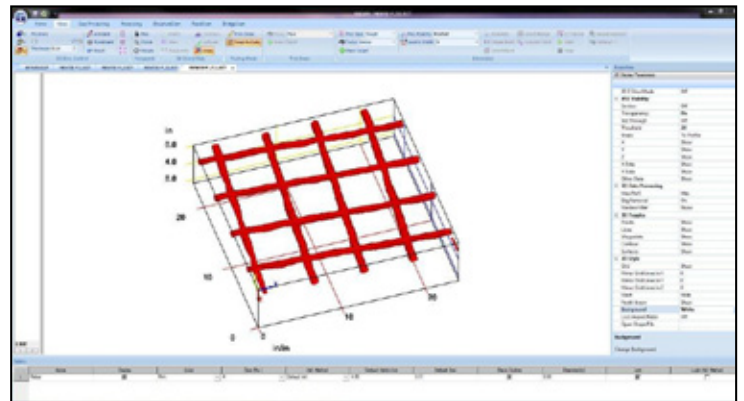
The RADAN software features bold and intuitive menu screens and clear data views for easier interpretation and enhanced post-processing capabilities.

StructureScan Module—This powerful module allows for easy creation of plan-view slices to aid in interpretation of StructureScan data files.

- Semi-automatic mapping of reinforcement locations and depths on simple concrete structures

3D Module—Process, view, and document 2D or 3D data with the 3D module, which provides enhanced 3D viewing options in a single dialog box. Users can stretch, shrink or zoom in on files as desired for customized presentation results.

- Interactive 3D mapping of conduits or other subsurface features within concrete structures



Screen shot of RADAN 7 3D Module; three-dimensional image of a rebar mat.

Systems Include

- StructureScan Mini or StructureScan Mini HR
- Dual Battery Charger
- Two Batteries
- Hand Strap
- Transit Case
- Quick Start Guide
- Training Video
- Data collection grids (3D system)
- 2-year warranty

StructureScan Mini Viewer

The StructureScan Mini Viewer software is a free online visualization program for the GSSI StructureScan Mini. The software is ideal for basic post processing of 2D StructureScan Mini data files.



www.geophysical.com • sales@geophysical.com