



Palm Antenna

Features

Compact Design

Designed to fit easily in your hand, the Palm Antenna makes data collection in tight spaces and along walls no longer an obstacle

Integrated Tool

All-in-one GPR antenna, cable, survey wheel combo

Durability

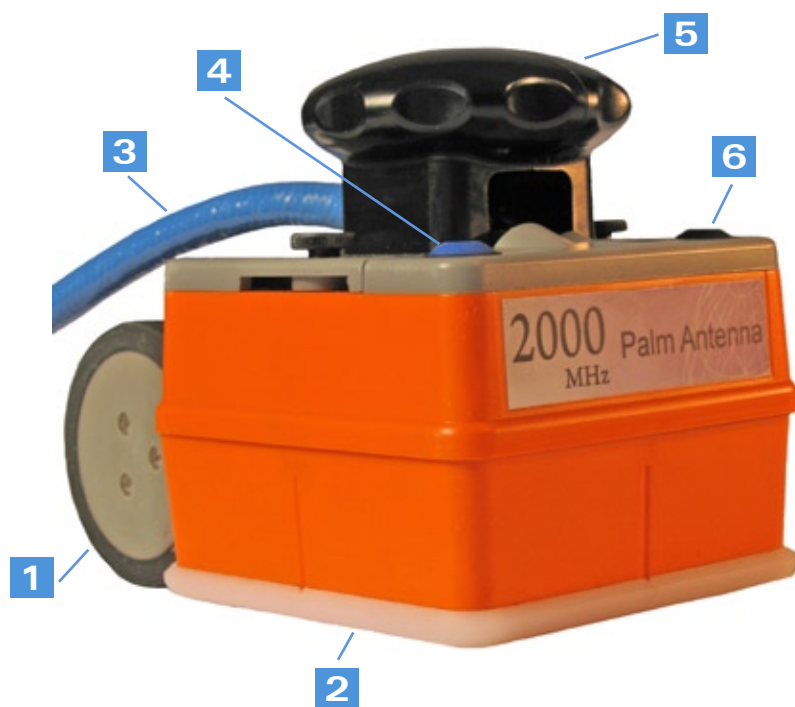
Plastic casing and replaceable skid plate for long-lasting performance

Premium Mobility

The antenna itself is just over one pound, and total weight with cable is less than three and a half pounds—allowing it to be ultra-portable

Value

This integrated tool provides the perfect blend of performance and cost



- | | |
|-----------------------------|---------------------|
| 1 Survey wheel with encoder | 4 Deadman switch |
| 2 Replaceable skid plate | 5 Removeable handle |
| 3 7-meter control cable | 6 Marker switch |



Structural Inspection Solution in a Small Form-Factor



2.2 in.
(56.5 mm)

4.1 in.
(104.5 mm)

6 in. (154.7 mm)

Antenna without survey wheel: 3.6 in. (91.5 mm)

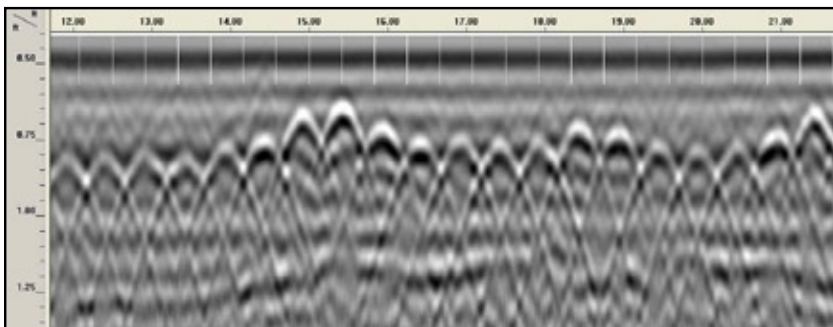
Internal Electronics with a
Military Style Cable Connector



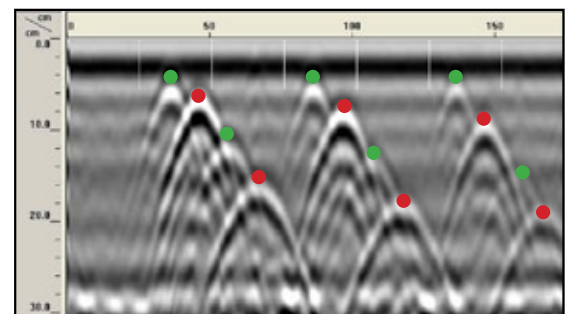
Custom Designed
Rugged Transit Case



Data Quality You
Expect from GSSI



6 inches (15.24 cm) on-center wire mesh at varying depths



● Plastic Conduit ● Steel Rebar

Specifications

Center Frequency: 2000 MHz
 Depth Range: 10-12 inches (25-35 cm)
 Antenna Weight: 1.1 pounds (.49 kg)
 Cable Weight: 2.1 pounds (.95 kg)
 Model Number: 62000



Copyright © 2009 Geophysical Survey Systems, Inc.
 July, 2009

www.geophysical.com • sales@geophysical.com

12 Industrial Way • Salem, NH 03079-4843
 Tel: (603) 893-1109 • Fax: (603) 889-3984